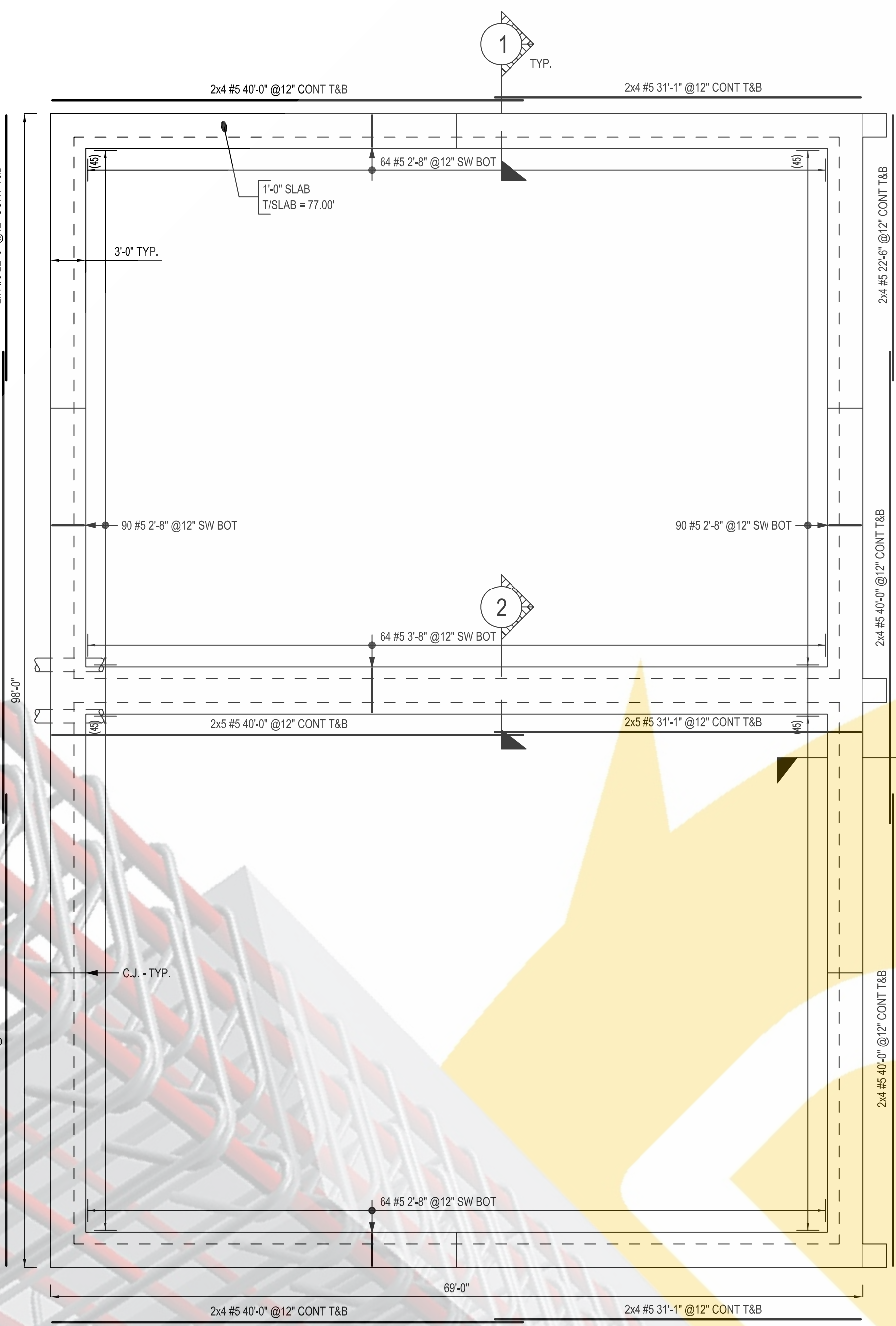
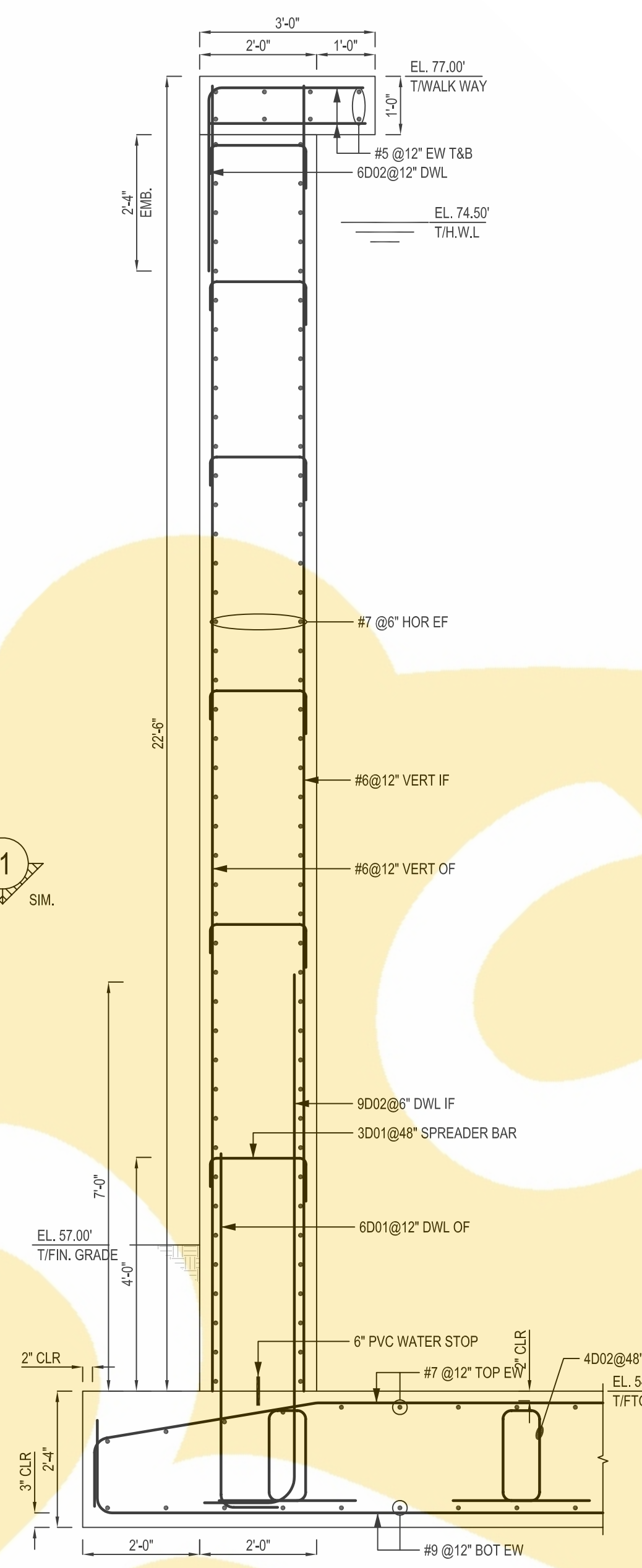


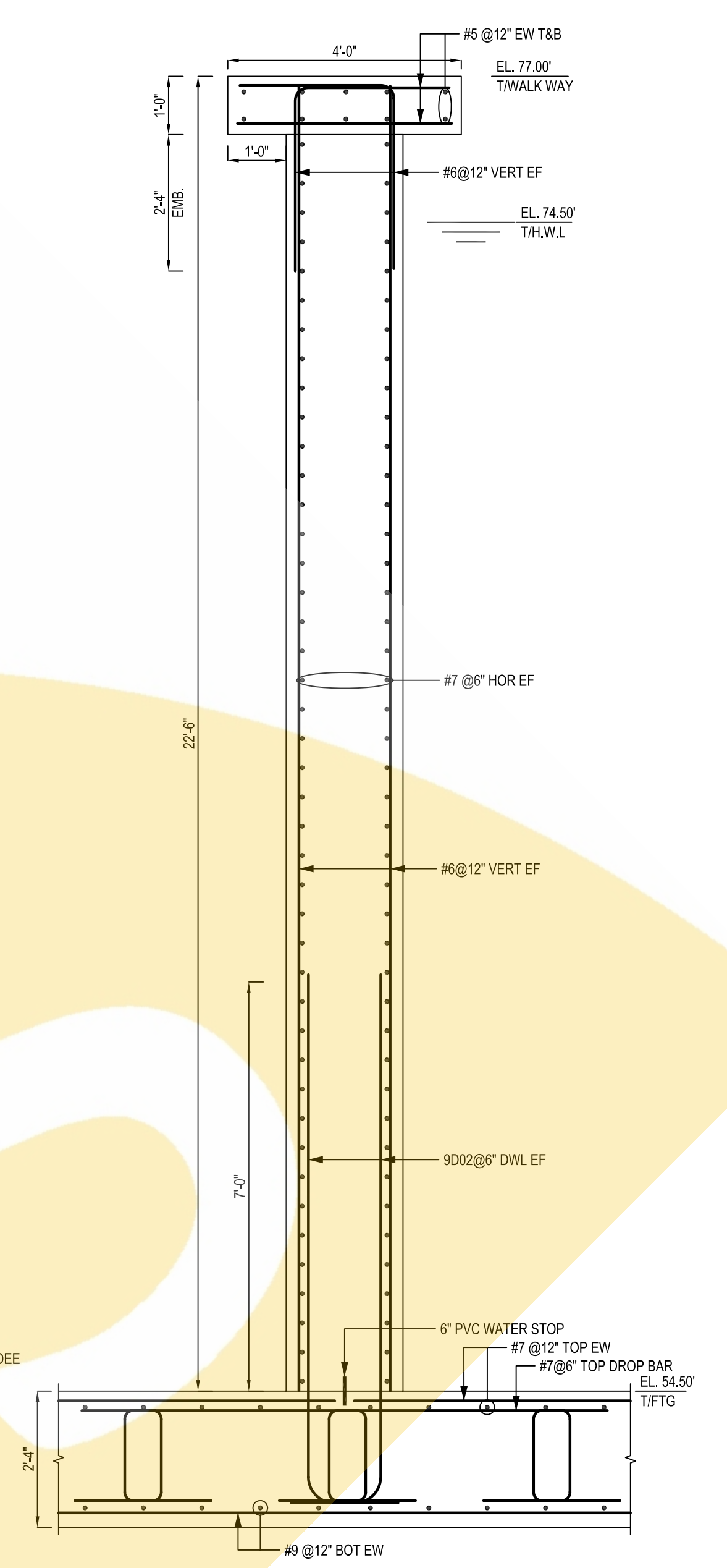
SBR TANK FOUNDATION REBAR LAYOUT
 SCALE: 1/8"=1'-0"
 SDR: 15 S-101



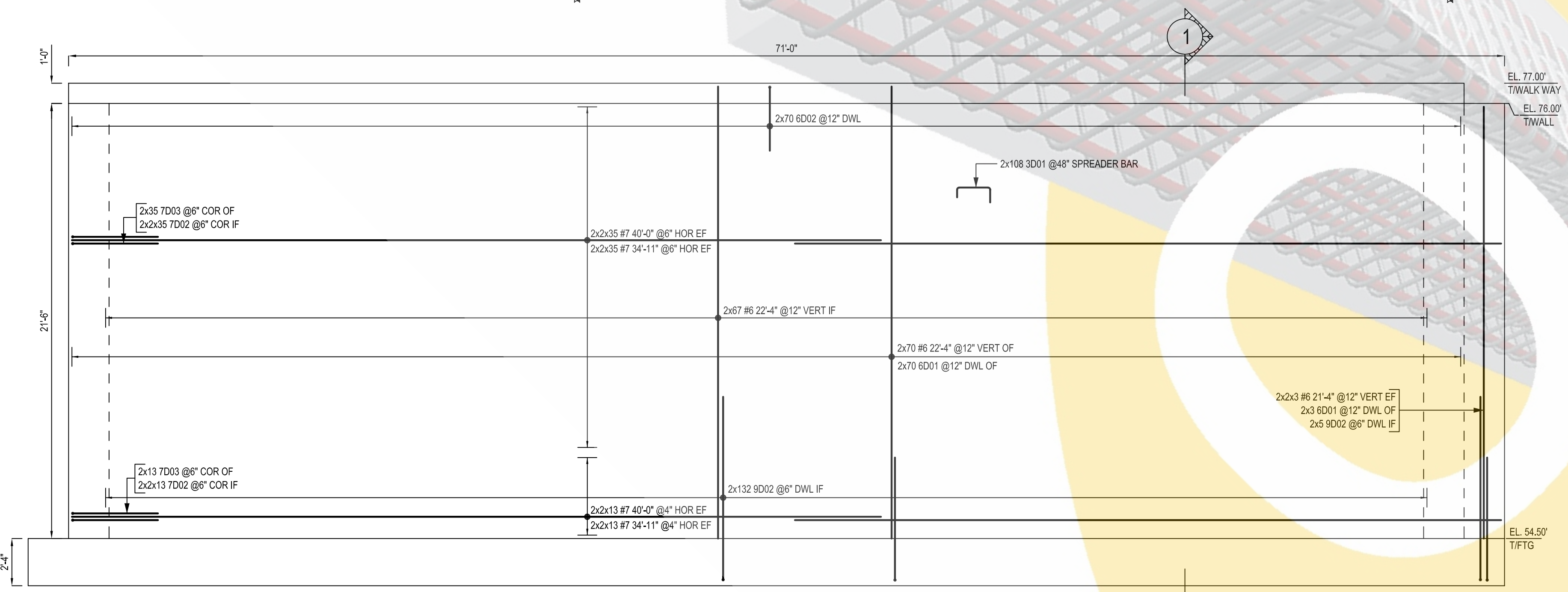
SBR TANK TOP WALKWAY LEVEL REBAR LAYOUT
 SCALE: 1/8"=1'-0"
 SDR: 15 S-101



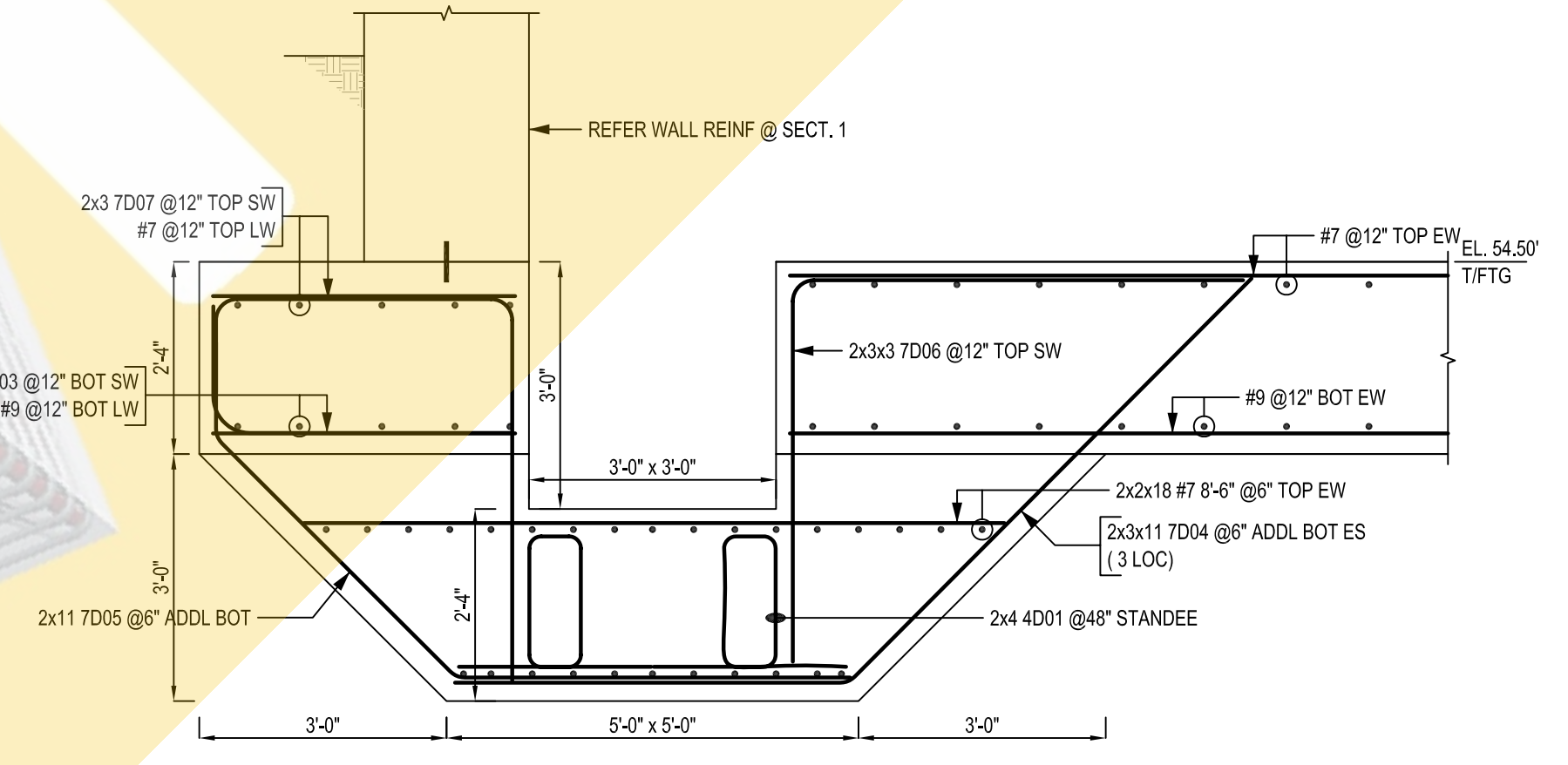
SECTION 1
 SCALE: 1/2"=1'-0"
 SDR: 1/15 S-301



SECTION 2
 SCALE: 1/2"=1'-0"
 SDR: 2/15 S-301



ELEVATION A
 SCALE: 1/4"=1'-0"
 SDR: 1/15 S-301
 (2 LOC)



SECTION 3
 SCALE: 1/2"=1'-0"
 SDR: 2/15 S-301
 (2 LOC)

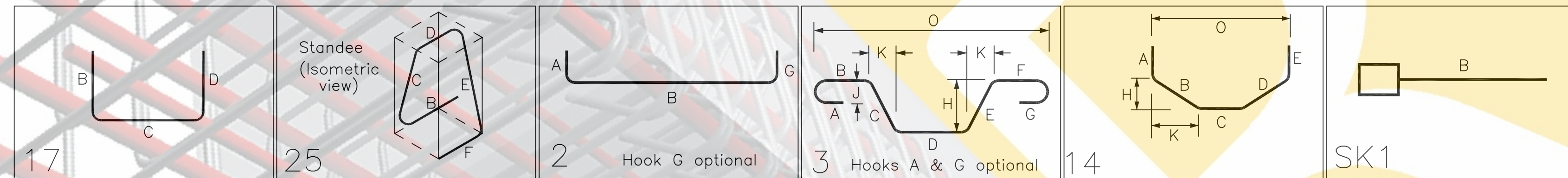
ONCE REBAR SERVICES

Release Number: R4.01-R4.03

					BENDING DETAILS											
Bar Mark	Qty	Size	Total Length	Type	'A'	'B'	'C'	'D'	'E'	'F'	'G'	'H'	'J'	'K'	'O'	'R'
3D01	624	#3	2'-11"	17			0'-6"	1'-8"	0'-9"							
4D01	8	#4	7'-0"	25			1'-6"	1'-8"	0'-8"	1'-8"	1'-6"	1'-7 1/2"		0'-9 1/2"		
4D02	494	#4	6'-11"	25			1'-6"	1'-7 1/2"	0'-8"	1'-7 1/2"	1'-6"	1'-7"		0'-9 1/2"		
6D01	341	#6	7'-1"	2	1'-0"		6'-1"									
6D02	478	#6	5'-10"	17			2'-8"	3'-2"								
7D01	278	#7	7'-5"	2	1'-2"		6'-3"									
7D02	192	#7	5'-5"	2	1'-2"		4'-3"									
7D03	96	#7	8'-6"	17			4'-3"	4'-3"								
7D04	66	#7	11'-8 1/2"	3			4'-9 1/2"	6'-11"				4'-11 1/2"		4'-10"	9'-7 1/2"	
7D05	22	#7	10'-1 1/4"	14	1'-2"		4'-1 1/4"	4'-9 1/2"				2'-11 1/4"		2'-11 1/4"	7'-8 1/4"	
7D06	18	#7	10'-2"	17			4'-8"	5'-6"								
7D07	6	#7	9'-6"	17			1'-2"	3'-8"	4'-8"							
7D08	245	#7	39'-11 3/4"	14	1'-2"		3'-10 1/2"	34'-11 1/2"				0'-7 1/2"		3'-10"	38'-9 1/4"	
7D09	6	#7	33'-3 3/4"	14	1'-2"		3'-10 1/2"	28'-3 3/4"				0'-7 1/2"		3'-10"	32'-1 1/4"	
7D10	97	#7	16'-1"	14	1'-2"		3'-10 1/2"	11'-0 1/2"				0'-7 1/2"		3'-10"	14'-10 1/2"	
9D01	6	#9	33'-9"	2	1'-7"		32'-2"									
9D02	918	#9	10'-8"	2	1'-7"		9'-1"									
9D03	6	#9	5'-3"	2	1'-7"		3'-8"									
9D04	6	#9	32'-9"	2	1'-7"		31'-2"									
9D05	71	#9	35'-10"	2	1'-7"		34'-3"									
9D06	168	#9	40'-0"	2	1'-7"		38'-5"									
9D07	97	#9	16'-10"	2	1'-7"		15'-3"									

Release Number: COUPLER

					BENDING DETAILS											
Bar Mark	Qty	Size	Total Length	Type	'A'	'B'	'C'	'D'	'E'	'F'	'G'	'H'	'J'	'K'	'O'	'R'
7D11	463	#7	4'-3"	SK1		4'-3"										
9D08	103	#9	4'-3"	SK1		4'-3"										



LAP SCHEDULE

BAR DIA	TOP	OTHER
#3	1'-11"	1'-5"
#4	2'-6"	1'-10"
#5	3'-2"	2'-5"
#6	3'-9"	2'-10"
#7	5'-6"	4'-3"
#8	6'-4"	4'-10"
#9	7'-2"	5'-6"

COUPLER SCHEDULE

SIZE	END PREP	REINFORCING
#9	4'-3"	103 9D08 @12" COUPLER BOT
#7	4'-3"	205 7D11 @6" COUPLER TOP
#7	4'-3"	2x129 7D11 @6" COUPLER HOR EF